

Product Information

| | |
|----------|---------|
| Language | INGLESE |
| Nr. | 257 |
| Date | 09/2016 |
| Subject | GST 360 |



our power, your passion

NEW PROFESSIONAL GST 360 PRUNING CHAINSAWS

DESIGN

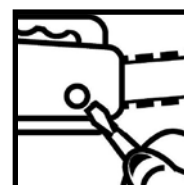
GIUGIARO

D E S I G N

PERFORMANCE



COMFORT



GST 360

GST 360 is a compact machine, characterized by an excellent power to weight ratio, it is an ideal chain saw for pruning activities and felling of small-medium diameter trees, either from the ground on in height, for particular for professionals.

The new chain saw is an excellent combination of lightness, cutting capacity and flexibility of use, high torque and power without limits. Standing out as the ideal tool for those who face fast, precise and frequent cutting.

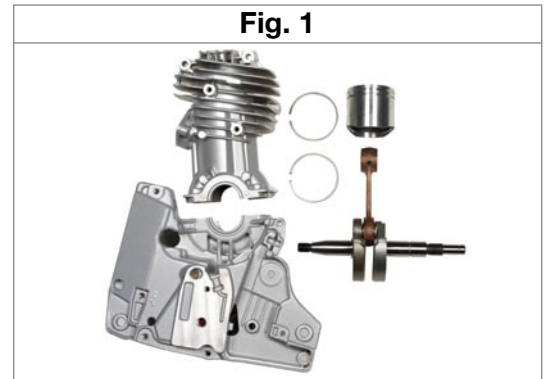
Engineering developments, improvements and several new features make this chainsaw:

- reliable
- sturdily-built
- easy to maintain
- light

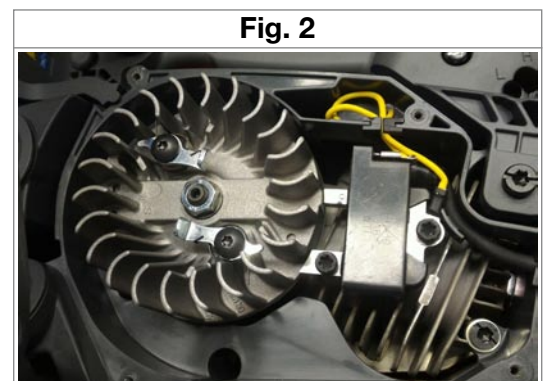
in all types of operating conditions.

PERFORMANCE AND ENGINEERING SOLUTIONS

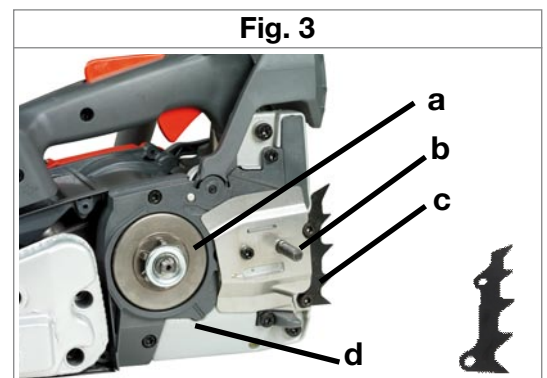
- **Professional engine** 35,1 cm³ two-stroke (EURO 2) rated a generous 2,0 HP (1,5 kW), guarantees top performance.
- **Light alloy crankcase, piston is fitted 2 rings, diecast cylinder** with Nickel plating, forged con rod and crankshaft (Fig. 1): guaranteeing an extremely rugged and durable engine.



- **Digital coil with electronic control** (Fig. 2) **and rev limiter**: for easier starting, improved performance thanks to uniform combustion, and reduced fuel consumption.



- **“ON-BOARD” clutch** (Fig. 3a) with drum and brake band built into the crankcase: prevents ingress of foreign matter between the centrifugal weights ensuring consistently perfect operation, the disassembly of the chain guard simplifies cleaning and/or routine maintenance.
- **Removable pin** (Fig. 3b),
- **Removable steel spike** (Fig. 3c)
- **Light alloy crankcase and bar** (Fig. 3d)

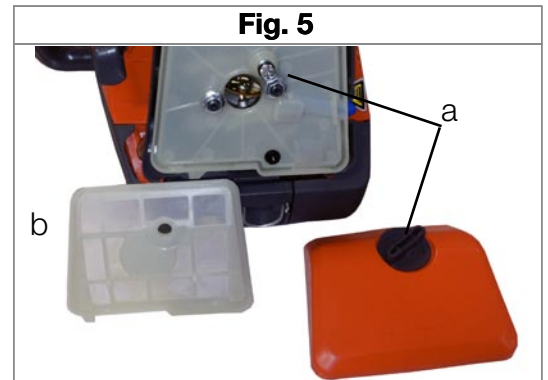


- **Aluminium oil pump** (Fig. 4a) with **adjustable flow rate**: allowing the operator to adjust the oil feed to suit the workload of the machine and the type of wood being cut.
- **Plastic worm gear with brass bush** (Fig. 4b).



PERFORMANCE AND ENGINEERING SOLUTIONS

- **Filter accessible** without the need for **tools**: (and attached permanently to the cover to avoid being lost) (Fig. 5a)
- **A large nylon air filter and labyrinth pre-filter** (Fig. 5b) offer excellent filtration, ideal for heavily dust-laden environments.



- **“Easy On”**: makes the engine easier to start, without kick-backs, minimizing operator effort (Fig.6).



- **Lateral chain tensioner** for swift adjustment of chain tension in any operating position (Fig. 7).
- **The wide chips discharge section** at the bottom of the guidebar has been designed to increase their discharge, reducing the time required for maintenance and cleaning



- Clearly visible **primer** device, for ease of access and operation (Fig. 8a): improves starting from cold and after refuelling and following lengthy idle periods.



PERFORMANCE AND ENGINEERING SOLUTIONS

- **Anti-vibration system** using 3 spring dampers and 2 rubber stops: significantly isolates the operator from engine vibration, for greater comfort during use (Fig. 9).



- **Greater compactness** and **lighter weight** guarantee ease of handling and operation.

- **Ergonomics** and **balance** (Fig. 10), thanks to a designer of excellence (**GIUGIARO DESIGN**), the new pruning chain saw is distinguished by excellent handling in any working position without operator fatigue.

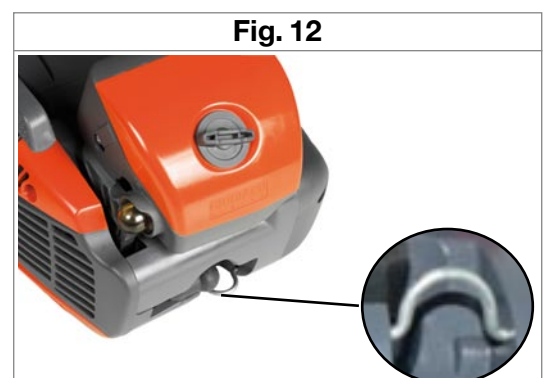


- **Ergonomic controls**: all the controls are grouped together and easily accessible (Fig. 11).

- **The on/off switch** (Fig. 11a) returns automatically to the "on" position after each stop (always on).



- A special **steel hook foldable**, (Fig. 12) allows the operator to hang the chainsaw.





our power, your passion

TECHNICAL SPECIFICATIONS

| MODEL | GST 360 | |
|---|---------------------|--|
| ENGINE | | |
| TYPE | | Emak 2-stroke - EURO 2 |
| DISPLACEMENT | cm ³ | 35,1 |
| BORE | mm | 38 |
| STROKE | mm | 31 |
| IDLING SPEED RPM | rpm | 3000 ± 3200 |
| MAX NO LOAD SPEED (with bar/chain) | rpm | 12000 - 13000 |
| POWER | HP/kW (rpm) | 2,0 / 1,5 (9000) |
| MAX TORQUE | Nm (rpm) | 1,62 |
| SPECIFIC FUEL CONSUMPTION | g/HP h (rpm) | 375 |
| HOURLY FUEL CONSUMPTION | l/h (rpm) | 0,710 (9500) |
| IGNITION SYSTEM | | |
| TYPE | | Capacitive electronic |
| SPARK PLUG | | NGK CMR7A |
| FUEL & LUBRICATION SYSTEM | | |
| CARBURETTOR | | WT/EX-4754B |
| FUEL | | 2% (50:1) |
| FUEL TANK CAPACITY | l | 0,28 |
| OIL PUMP | | Automatic (gear driven) - Zero flow when idling - adjustable |
| OIL RESERVOIR CAPACITY | l | 0,23 |
| BAR AND CHAIN | | |
| BAR LENGTH | in. (cm) | 12" (30) - 14" (35) sprocket |
| CHAIN PITCH | in. | 3/8" x .050" / 45 links - 3/8" x .050" / 52 links (sprocket) |
| CHAIN BRAKE | | Inertia-activated |
| CHAIN TENSIONER | | Lateral |
| N° SPROCKET TEETH / Chain speed at 133% of maximum engine power speed | N° / m/s | 6 (sprocket) / 23,8 |
| SOUND PRESSURE EN 11681-1 - EN 22868 | dB (A) | - |
| GUARANTEED SOUND POWER LEVEL 2000/14/EC EN 22868 - EN ISO 3744 | dB (A) | - |
| VIBRATION LEVEL - (sprocket) EN 11681-1 - EN 22867 - EN 12096 | (m/s ²) | - |
| ANTI-VIBRATION MOUNTS | | 3 spring damper and 2 rubbers |
| DIMENSIONS (excluding bar/chain) | mm | 286x244x229 |
| WEIGHT | kg | 3,8 |
| POWER-TO-WEIGHT RATIO | kg/kW | 2,53 |

TREE CLIMBING TROUSERS

Safety



EN 381-5: 1995 type A Class 1 (20 m/sec.)

Approval CE, standards EN340 and EN 381-5: 1995 type A, Class 1, Category 2 PPE, able to resist a chain speed of 20 m/sec.

Anti-cut protection zone



180° front, 5 cm right inside leg, 5 cm left inside leg.



| | |
|------------------|---|
| Safety | <ul style="list-style-type: none"> • CE approval, standards EN340 and EN 381-5: 1995 type A, Class 1. • Category 2 PPE. • Anti-rip protection – RIPSTOP. • Special 5-layer anti-cut protection (sofly). |
| Fit | <ul style="list-style-type: none"> • Protective anti-cut trousers specifically designed and produced for tree climbing. Extremely lightweight with breathable fabric. Slim fit thanks to the tri-elastic stretch fabric for the maximum comfort and exceptional freedom of movement. |
| Materials | <ul style="list-style-type: none"> • Waterproofed with SOFIGUARD treatment. • 94% polyamide, 6% elastham (CORDURA - RIPSTOP) • Black reinforcement: 50% polyamide, 45% polyester, 5% elastham. |

| Additional | Code |
|-------------|-----------------------------|
| Sz. 42 | 3155051 |
| Sz. 44 | 3155052 |
| Sz. 46 | 3155053 |
| Sz. 48 | 3155054 |
| Sz. 50 | 3155055 |
| Sz. 52 | 3155056 |
| | Additional sizes on request |
| Pack | Cardboard box |

Practical



Anti-cut protection with "Sofly" technology: 5 layers of high-tenacity anti-cut fabric, extremely lightweight and flexible to guarantee safety, low weight, a comfortable fit and freedom of movement. The antibacterial treatment and fast drying performance help to banish odours while enhancing the sensation of freshness and comfort for the wearer.



LH leg pocket with zipper.



Spark plug wrench pocket on LH leg.



Large rear concealed zippers for a slim fit and the maximum comfort, also when worn in conjunction with boots.



Tri-elastic stretch fabric for a close fit and freedom of movement. Elasticized waistband with 2 press stud fastener system to ensure a perfect fit.



2 front pockets and back pocket with zipper, braces buttons, 2 attachment rings, 2 belt loops, dorsal loop.



Knee, crotch and rear in bi-elastic breathable fabric for the maximum freedom of movement and ventilation.

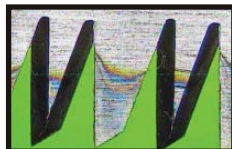
SRM18R folding pruning



High carbon steel blade with a hard chrome coating that also provides anti-corrosion performance. Replaceable blade.



The teeth are ground on 3 planes and pulse hardened to create an extremely durable cutting edge.



The special machining of the blade using the "surface flaring" technique facilitates penetration into the branch and greatly reduces friction.



| | |
|-----------------|--|
| Model | SRM18R |
| Code | 3063063 |
| Ean 13 | 8026619053475 |
| Cutter type | Cutting action tie |
| Blade | High carbon steel with hard chrome coating |
| Blade length | 18 cm |
| Treatment | Pulse hardened |
| Handle type | Rubber clad |
| Handle material | Plastic |
| Spare parts | Available |
| Weight | 210 g |
| Packing | 10 pieces / carton box |

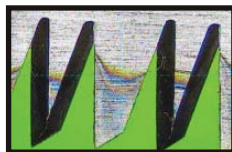
SRM30 pruning saw



High carbon steel blade with a hard chrome coating that also provides anti-corrosion performance. Replaceable blade.



The teeth are ground on 3 planes and pulse hardened to create an extremely durable cutting edge.



The special machining of the blade using the "surface flaring" technique facilitates penetration into the branch and greatly reduces friction.



| | |
|-----------------|---|
| Model | SRM30 |
| Code | 3063067 |
| Ean 13 | 8026619055301 |
| Cutter type | Cutting action tie |
| Blade | High carbon steel with hard chrome coating |
| Blade length | 30 cm |
| Treatment | Pulse hardened |
| Handle type | Rubber clad |
| Handle material | Plastic |
| Spare parts | Available |
| Weight | 240 g |
| Packing | 10 pieces / carton box |